



autobahn[®]

**Installation Guide
& Permissions Setting
for autobahn[®] installed launcher**

A Passion to Perform.

Deutsche Bank



Contents

| | | |
|-------------------------------------|--|----|
| 1. autobahn® | | 4 |
| 2. Technology Overview | | 5 |
| 3. Installation | PC specifications | 5 |
| | Install process | 6 |
| 4. Running | Application start | 9 |
| | Rollback | 10 |
| 5. Client Connectivity Setup | Client HTTP proxy configuration | 11 |
| | Internet Access – Proxy Configuration | 11 |
| | Internet Access – Firewall Configuration | 11 |

1

2

3

4

5

From Debt to Equity, from Cash through Structured Products, and from Analytics to Execution, autobahn® is Deutsche Bank's family of award winning electronic distribution platforms.

This document will take you through the installation of the autobahn launcher. This is used to launch members of the autobahn family that provide installed applications to enable fast execution and a wide range of functionality.

At the time of writing, these applications include:

autobahn®FI
autobahn®FX
autobahn®FO
autobahn®Finance

Please contact our IT Support team with any questions. They can be reached at autobahn.support@db.com or on:

| | |
|--------|------------------|
| Europe | +44 207 547 5050 |
| US | +1 866 335 5050 |

Asia Pacific Toll Free help lines:

| | |
|-------------|---------------------|
| Australia | 1800 004 802 |
| China | 10800 650 0315 |
| Hong Kong | 800 96 6272 |
| Indonesia | 00 1803 657 763 |
| India | 000 800 650 1303 |
| Japan | 00531 650 113 |
| Korea | 00 798 651 7262 |
| Malaysia | 1800 80 6167 |
| New Zealand | 08 004 90032 |
| Philippines | 102 718 0065 070 73 |
| Singapore | 1800 337 8077 |
| Taiwan | 00801 651 708 |
| Thailand | 00 1800 656 743 |

The installed user interface for autobahn uses technology very similar to Java Web Start. Both Java Web Start and installed UI use the Java Network Launch Protocol (JNLP).

The installer for the new user interface puts a private Java virtual machine onto the users desktop, and a minimal set of components required to contact the web server (a simple JNLP client and tools for proxy detection). It also adds shortcuts to the user's menu.

On first launch, the application downloads and caches the login application from an accessible area of the website. After successful login, the main applications are downloaded and cached from a secure area.

On subsequent login, updates are automatically downloaded; hence there is no upgrade deployment effort after the initial installation.

Installation

PC specifications

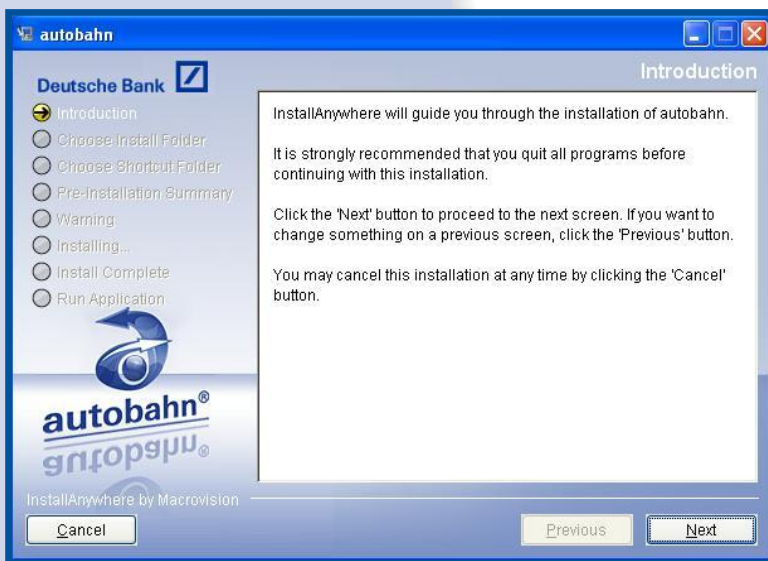
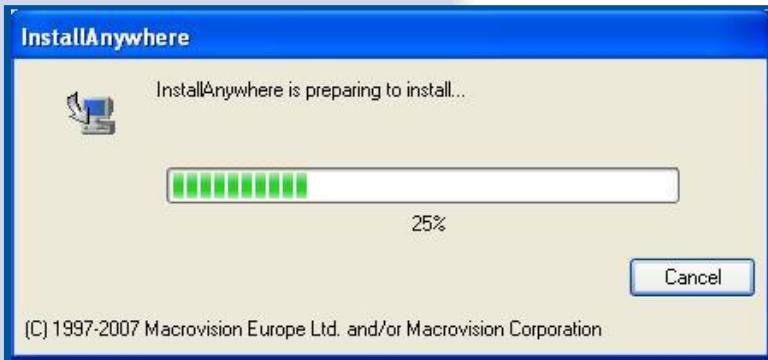
| | |
|----------------------------|---|
| Hardware: | Recommended: Pentium 4 2 GHz, 1GB RAM |
| Minimum: | Pentium 3, 1 GHz, 512MB RAM |
| Operating System: | Windows XP (Windows Vista supported) |
| Minimum Screen Resolution: | 800 by 600 pixels |
| Connectivity: | Internet (if a firewall is used it must allow HTTPS connect tunnels) |

Please note that like all applications, the more resource and bandwidth that is utilised by other applications the more adversely this may affect the autobahn applications.

Install process

The initial installation must be done by a local administrator. The installed UI for autobahn is packaged in a standard Windows installer. To install, run the executable advised by your sales person. This is distributed from a URL.

On clicking the executable, the application self extracts and installs.

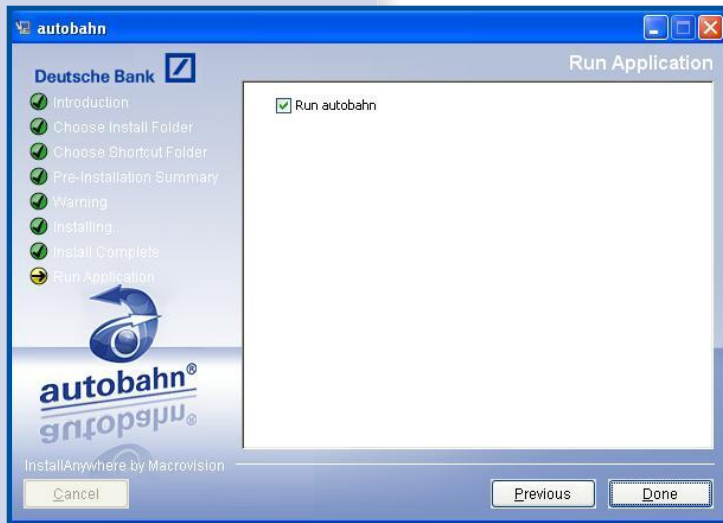


Installation

(we recommend in this screen to leave "Create shortcuts for all users" ticked). If you change the name from autobahn to something else this name will be used in the path used in instructions later on in this document.



- 1
- 2
- 3
- 4
- 5



After the installation has completed, the administrator should ensure that the new subdirectory structure in the user's profile area is fully modifiable by the user.

For example, if the application was installed in:

"C:\Program Files\autobahn"

Then the configuration files, logs and caches are located at

"%USERPROFILE%\Local Settings\Application Data\autobahn\"

and should be modifiable by the user.

1

2

3

4

5

Application Start

To run the application, click on the "Start" menu "Programs" menu item, then "Autobahn" (or other icon as selected during install) to launch the login box.

To log in, use the User Name and password given to you by your Sales representative.



After a successful login, the autobahn application downloads and launches.



To then launch the individual autobahn applications, click on the relevant icon.

Checking the tick box next to an individual application will cause it to launch automatically each time you sign in to the autobahn® launcher.

Rollback

To uninstall the application completely, use the standard Windows control panel uninstall procedure. Note this should be done as a user with administrator privileges.

Microsoft Desktop Standards

The application complies with current Microsoft Winlogo desktop standards. This ensures that the application and its users cannot adversely affect the smooth running of other applications.

In particular:

- The application does not write to C:\program files\autobahn at runtime
- The application does not write to C:\Windows at install or runtime
- The application does not write to C:\temp at install or runtime
- The application does not write to C:\ at install or runtime
- The application does not require Internet Explorer security changes
- The application does not depend on other software being present on the machine
- The installed components are not publicly advertised on the machine and will not normally be detected by other applications.
- The application does not write to non-user registry keys at runtime
- The application does not require elevated admin rights at runtime

Some corporate policies may recommend that the application make use of a standard public JRE that may be available within the corporation. However the application installs and uses its own private JRE. This ensures each installation is standard which is necessary for support of the application. This private JRE is not advertised publicly on the machine – it exists only within the installation directory of the application.

Client HTTP proxy configuration

The initial installer contains a minimal set of components – a private Java version, code to download the main application and a URL to the website that will provide the main application and subsequent updates.

Initially, the application will attempt to access its web server URL directly. If this fails, it will attempt to automatically detect proxy settings and use them. If this also fails, a configuration dialog is prompted.

This dialog allows proxy settings to be set either manually, or by running the auto detection routine. Current settings are persisted automatically in the users part of the registry (specifically HKEY_CURRENT_USER\Software\JavaSoft\Prefs\com\db\abprof\bootstrapper\config\autobahn).

Internet Access – Proxy Configuration

Please ensure your Proxy Configuration allows you to connect to

<https://www.autobahnprofessional.db.com/>

<https://www.autobahnfi.db.com/>
<https://data.autobahnfi.db.com/>
<https://www.autobahnfi.us.db.com/>
<https://data.autobahnfi.us.db.com/>
<https://www.autobahnfi.ap.db.com/>
<https://data.autobahnfi.ap.db.com/>
<https://www.autobahnfidr.db.com/>
<https://data.autobahnfidr.db.com/>

<https://www.autobahnfx.db.com/>
<https://data.autobahnfx.db.com/>
<https://www.autobahnfxdr.db.com/>
<https://data.autobahnfxdr.db.com/>
<https://www.autobahnfx.us.db.com/>
<https://data.autobahnfx.us.db.com/>
<https://www.autobahnfx.ap.db.com/>
<https://data.autobahnfx.ap.db.com/>

<https://www.autobahn-moneymarkets.db.com/>

Internet Access – Firewall Configuration

Please allow access to ports 80, 443, and preferably 9001 on the following IP addresses:

autobahn® Launcher:
160.83.45.7
160.83.45.8
160.83.76.11
160.83.76.13
202.21.224.160
202.21.224.161
160.83.54.7
160.83.54.22

autobahn®FI:
160.83.45.9
160.83.45.10
160.83.76.9
160.83.76.10
202.21.224.162
202.21.224.163
160.83.54.17
160.83.54.18

autobahn®FX:

IP addresses for autobahn®FX application are available at the link
https://www.autobahnfx.db.com/broadcast/autobahnFX_connectivity.html

autobahn®FO:

autobahn®Finance:
160.83.79.63

Radianz Connection (preliminary)

For accessing autobahn Launcher and autobahn FI over Radianz two configuration steps should be performed:

1. Following Radianz IP should be configured on client firewall.
2. Following mapping of physical IP addresses to hostnames must be configured in the hosts file on the customer PC or in the internal DNS.

autobahn® Launcher:

| Host name | IP | Ports |
|------------------------------------|-----------------|-------|
| www.autobahnprofessional-uk.db.com | 206.60.130.97 | 443 |
| www.autobahnprofessional.dbvpn.com | 206.190.124.101 | 443 |

autobahn®FI:

| Host name | IP | Ports |
|---------------------------|----------------|-----------|
| www.autobahnfi.db.com | 206.60.130.99 | 443 |
| data.autobahnfi.db.com | 206.60.130.100 | 443, 9001 |
| www.autobahnfi.dbvpn.com | 206.190.124.84 | 443 |
| data.autobahnfi.dbvpn.com | 206.190.124.85 | 443, 9001 |



autobahn®

For more information
about the suite of
autobahn® products visit
www.autobahn.db.com

Further Information

Please contact our IT Support team with any questions.
They can be reached at autobahn.support@db.com or on:

| | |
|-----------------------------|---------------------|
| Europe | Japan |
| +44 207 547 5050 | 00531 650 113 |
| US | Korea |
| +1 866 335 5050 | 00 798 651 7262 |
| | Malaysia |
| Asia Pacific Toll Free help | 1800 80 6167 |
| lines: | New Zealand |
| Australia | 08 004 90032 |
| 1800 004 802 | Philippines |
| China | 102 718 0065 070 73 |
| 10800 650 0315 | Singapore |
| Hong Kong | 1800 337 8077 |
| 800 96 6272 | Taiwan |
| Indonesia | 00801 651 708 |
| 00 1803 657 763 | Thailand |
| India | 00 1800 656 743 |
| 000 800 650 1303 | |

www.db.com

MARKETING MATERIAL. This brochure is intended for discussion purposes only and does not create any legally binding obligations on the part of Deutsche Bank AG and/or its affiliates ("DB"). Without limitation, this brochure does not constitute an offer, an invitation to offer or a recommendation to enter into any transaction. When making any investment decision, you should rely solely on the final documentation relating to the transaction and not the summary contained herein. DB is not acting as your financial adviser or in any other fiduciary capacity with respect to this or any other proposed transaction.

FX products may not be appropriate for all investors and before entering into any transaction you should take steps to ensure that you fully understand the transaction and have made an independent assessment of the appropriateness of the transaction in the light of your own objectives and circumstances, including the possible risks and benefits of entering into such transaction. The risk of trading FX products may result in you losing more money than you originally invested, therefore you should only invest money you can afford to lose. You should also consider seeking advice from your own advisers in making this assessment. If you decide to enter into a transaction with DB, you do so in reliance on your own judgment.

The information contained in this brochure is based on material we believe to be reliable; however, we do not represent that it is accurate, current, complete, or error free. Details of the services provided and any opinions contained in this document constitute our judgment as of the date of the document and are subject to change without notice. This material was prepared by a Sales or Trading function within DB, and was not produced, reviewed or edited by the Research Department. Any opinions expressed herein may differ from the opinions expressed by other DB departments including the Research Department. The distribution of this brochure and availability of the products and services in certain jurisdictions may be restricted by law. You may not distribute this document, in whole or in part, without our express written permission. DB SPECIFICALLY DISCLAIMS ALL LIABILITY FOR ANY DIRECT, INDIRECT, CONSEQUENTIAL OR OTHER LOSSES OR DAMAGES INCLUDING LOSS OF PROFITS INCURRED BY YOU OR ANY THIRD PARTY THAT MAY ARISE FROM ANY RELIANCE ON THIS DOCUMENT OR FOR THE RELIABILITY, ACCURACY, COMPLETENESS OR TIMELINESS THEREOF.

Deutsche Bank AG is authorised under German Banking Law (competent authority: BaFin - Federal Financial Supervising Authority) regulated by the Financial Services Authority for the conduct of UK business.